



Port Phillip Ferries

17 December 2019

UPDATE

Speed Exemption for PPF Vessels

(Maritime Safety Victoria Speed Exemption Notice 3.10)



Increased Speed Exemption – Southern dripline of the West Gate Bridge and the Western dripline of the Bolte Bridge

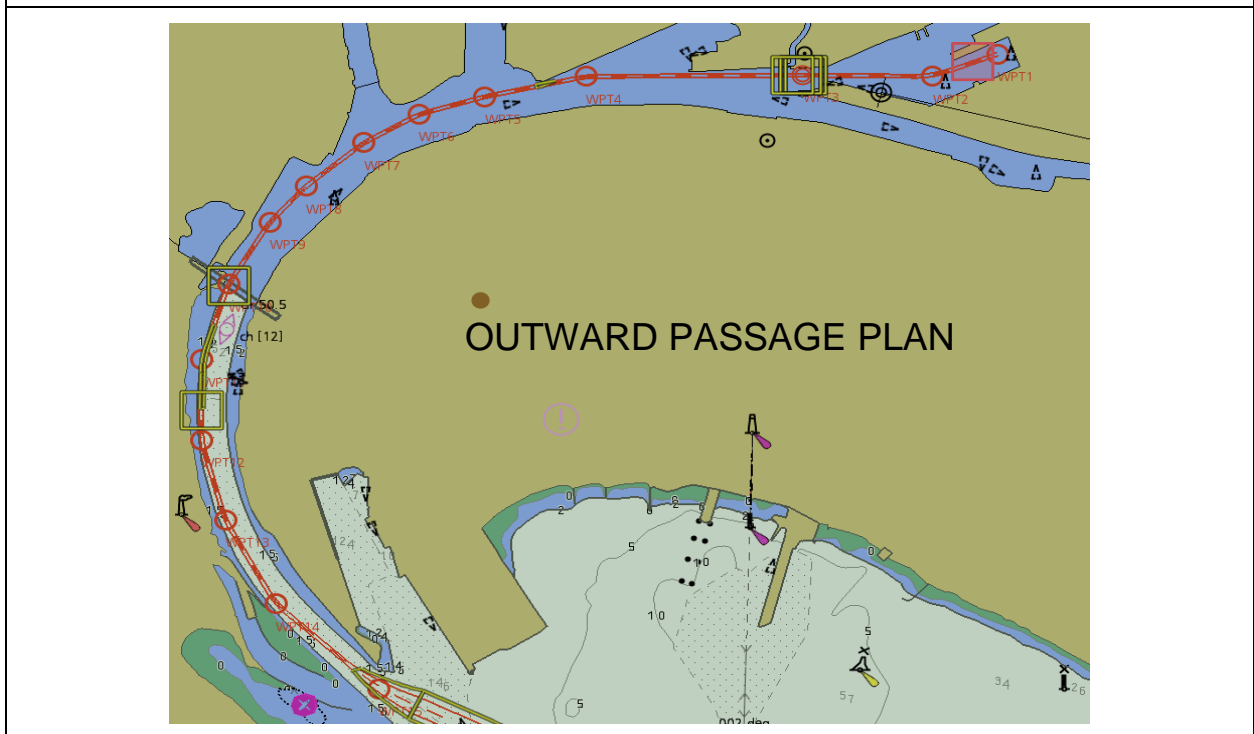
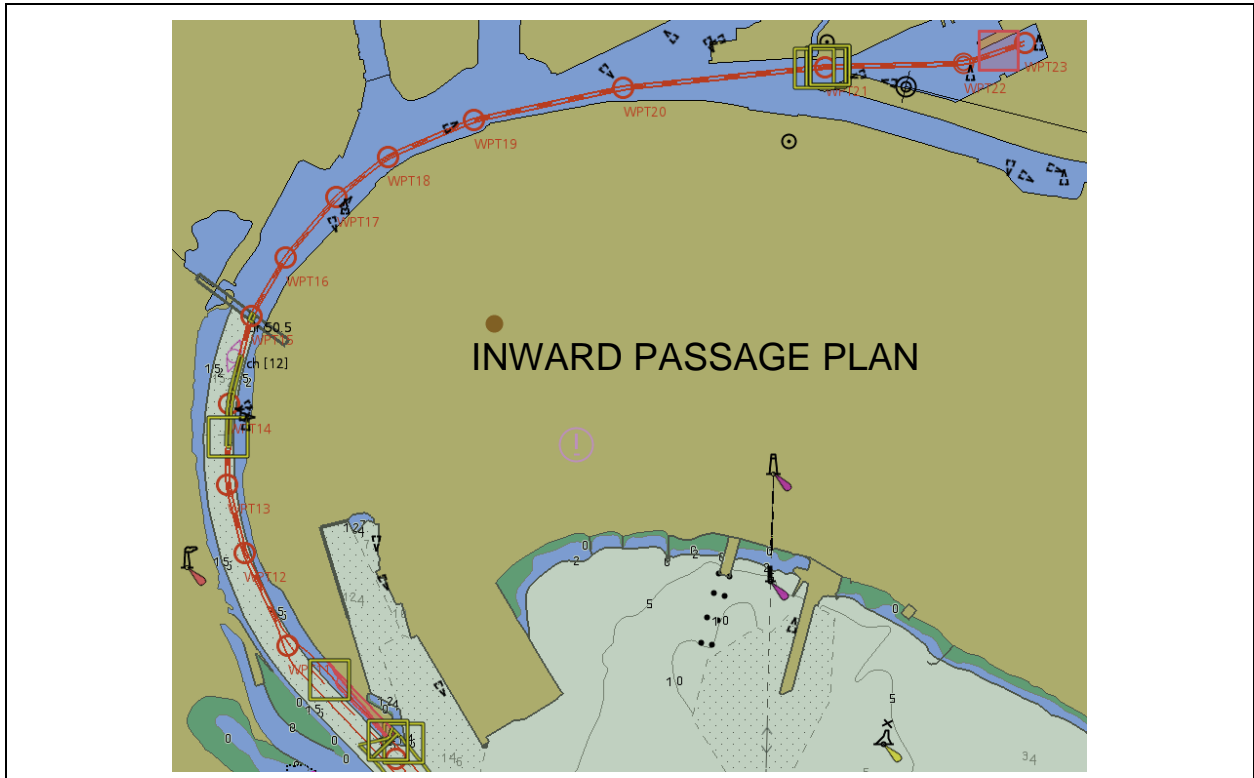
Please be advised that PPF vessels MV *Bellarine Express* and MV *Geelong Flyer* today received a 3 month trial exemption from Maritime Safety Victoria (MSV) to operate at the increased speed of 15 knots on the Yarra River between the southern drip line of the West Gate Bridge and the western drip line of the Bolte Bridge.

This change is implemented under Marine Safety Victoria Exemption Notice 3.10 which took effect on 16 December 2019.

Further information about vessel operations is provided in the next pages.

1. PPF Passage Plan for Speed Exemption Areas within the Yarra River

Please see below both the inward and outward passage plans for both vessels for the speed exemption areas. Further details are available upon request.



2. Vessel Operations

Port Phillip Ferries operate scheduled services between Geelong and Portarlington to Docklands in both directions between the hours 06:00 and 21:00 seven days a week. Please refer to the [timetable](#) on our website.

The vessel Master has the responsibility for the safe and the efficient operation of the vessel. The vessel Master is to monitor the speed of the vessel at all times having due regard to vessel traffic, weather conditions and manoeuvrability of the vessel.

The vessel Master may deviate from nominated passages plans if human life, property or the environment is at risk.

3. Contact Details

Should you have any queries regarding this announcement and/or would like to provide feedback to Port Phillip Ferries regarding this exemption, please contact us between 7am – 8pm on (03) 9514 8959 or email info@portphillipferries.com.au.