

17 October 2018

UPDATE

***MV Bellarine Express* - Speed Exemption**



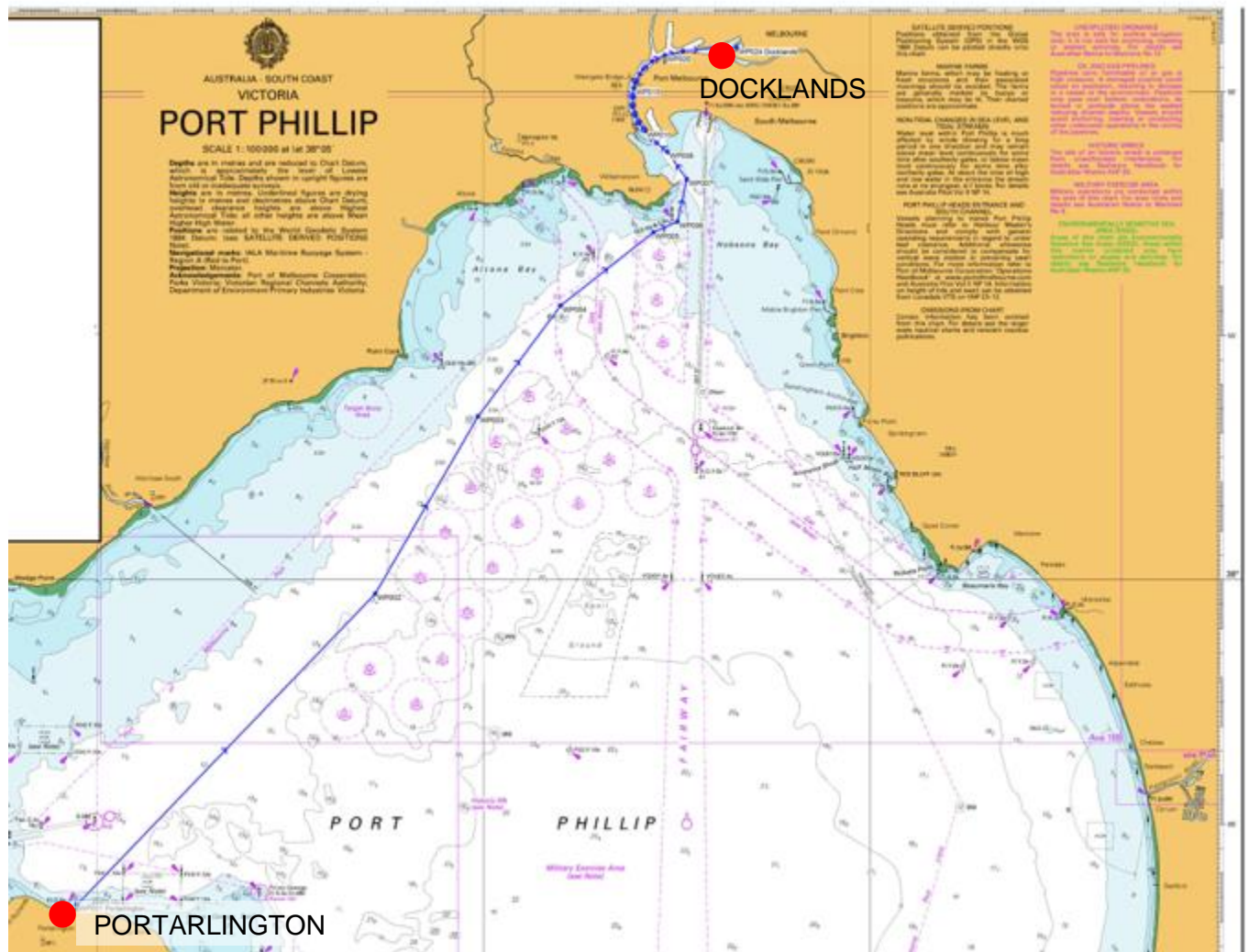
Permanent Increased Speed Exemption - Yarra River between Beacons 23-24 and West Gate Bridge

Please be advised that Port Phillip Ferries vessel *MV Bellarine Express* today received permanent exemption from Transport Safety Victoria (TSV) to operate at the increased speed of 15 knots on the Yarra River between Beacons 23 & 24 and the Westgate Bridge. This change is implemented under Marine Safety Victoria Exemption Notice 3.8 which took effect on 17 October 2018.

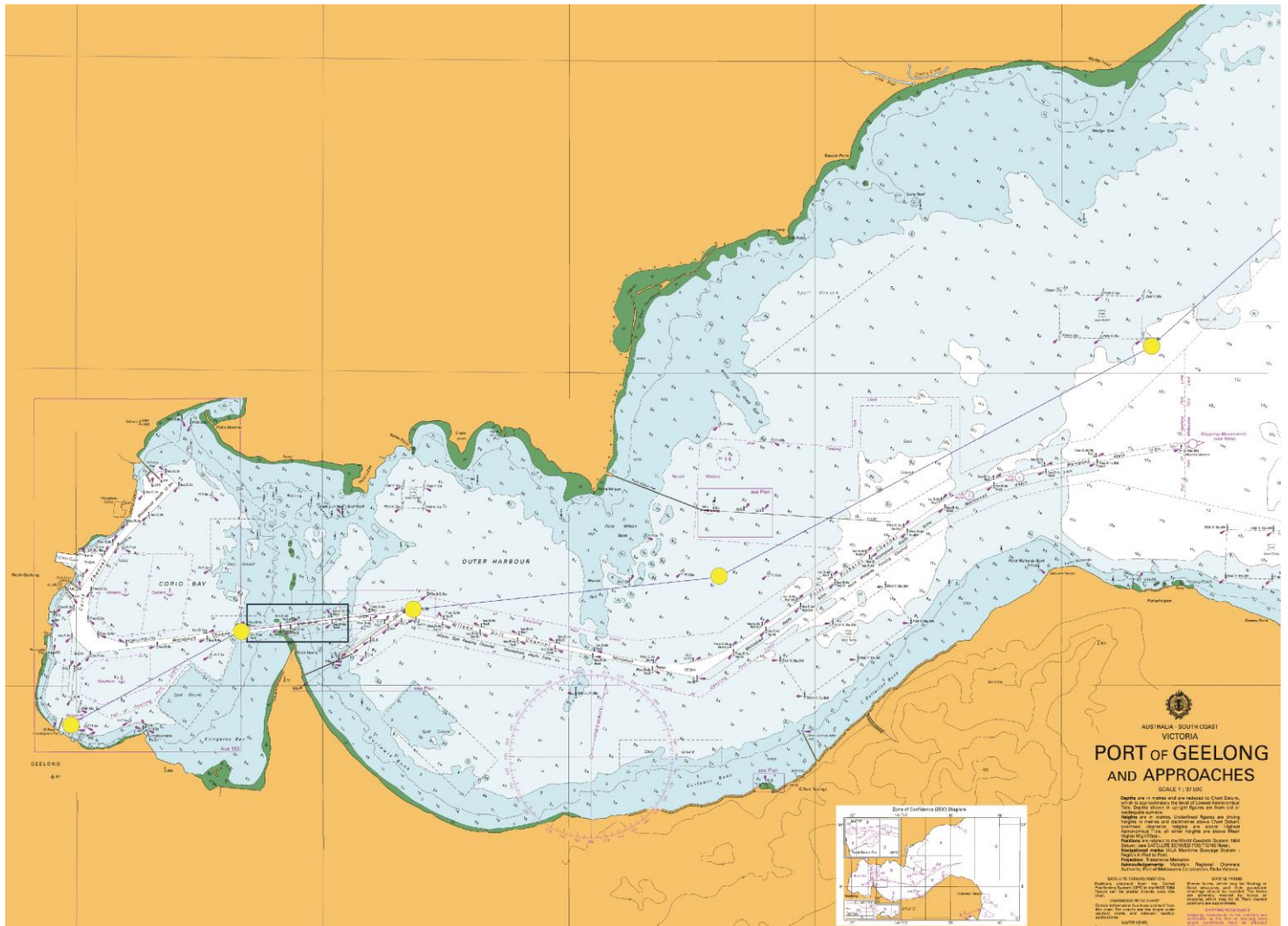
This exemption will be the subject of a periodic review conducted by Transport Safety Victoria.

Further information about vessel operations is provided in the next pages.

1. PPF Passage Plan – Portarlington to Docklands



2. PPF Passage Plan – Geelong to Docklands



3. PPF Passage Plan – Yarra River Entrance (Beacons 23/24) and West Gate Bridge (showing outward journey from Docklands)



4. Vessel Operations

Port Phillip Ferries operate scheduled services between Portarlington and Docklands in both directions between the hours 05:00 and 21:00 seven days a week. Daily Geelong services will be introduced in 2019.

The vessel Master has the responsibility for the safe and the efficient operation of the vessel. The vessel Master is to monitor the speed of the vessel at all times having due regard to vessel traffic, weather conditions and manoeuvrability of the vessel.

The vessel Master may deviate from nominated passages plans if human life, property or the environment is at risk.

5. Contact Details

Should you have any queries regarding this announcement, please contact us between 7am – 8pm on (03) 9514 8959 or email info@portphillipferries.com.au.